

# Knowing What Counts

VOL 2016, NO. 4

RUSHVILLE STATE BANK NEWSLETTER

WINTER 2016

Merry Christmas!

## FROM GREGG'S DESK.....

On behalf of the Rushville State Bank board, officers and staff, I want to wish you a Merry Christmas and Happy New Year! The opportunity to extend our sincere appreciation for your support and friendship during the past year is one of the pleasures of the Holiday Season, as we recognize that you are the reason for our success. **Please be sure to join us for our annual Christmas open house on Friday, December 16.**

This is always a good time to encourage everyone to spend your money at home, not just during the holidays but throughout the year. Our hard working merchants offer many of the goods and services that are found out of town, and help keep our local economy strong.

While you are in town, be sure to take notice of our beautifully decorated downtown area. Last year Kelly Greene submitted a picture of our central park decorated for the holidays to the Independent Community Bankers Association in Washington, DC, and the picture won first place in their Main Street Holiday Contest. Thanks to everyone who does the work needed to make this possible!

Have a happy, healthy and prosperous 2017!

*Gregg*



GO  LOCAL<sup>SM</sup>



## HOLIDAY—YEAR END HOURS

**Christmas**—Saturday, December 24—open regular hours until noon  
Monday, December 26—Bank closed

**New Year's**—Saturday, December 31—open regular hours until noon  
Monday, January 2—Bank closed

**2016 Year End Cut-Off**—Friday, December 30, 2:00pm



Member  
**FDIC**



# SCHUYLER COUNTY COMMUNITY FOUNDATION 2016 ANNUAL REPORT

by: Linda M. Butler, Vice President, Trust Officer

The Schuyler County Community Foundation was busy this year serving area charitable and community needs. This Foundation allows many groups and individuals to set up funds for charitable giving, community projects, scholarships, special needs, and grant making. Resources are used locally, helping our residents and improving our community.

## Activities and projects completed in 2016:

- *Central Park Square Lighting Fund* – square lighting upgraded, Christmas activities funded
- *Grow Rushville Running Fund* – running events supported
- *Hope Blooms Fund* – 13 grants fully funded and 10 partially funded
- *Horses with Wings Fund* – new trailer and operating expenses funded
- *Princess Theater Fund* – equipment and building upgrades completed
- *Rocket Boosters Fund* – new signage and exercise equipment purchased
- *Rushville Promotional and Marketing Fund* – Christmas, Corn Fest, yard sale activities funded
- *Schuyler County Historic Courthouse Renovation* – building foundation repairs planned
- *Scripps Park Historic Preservation Fund* – Cottage foundation repairs funded
- *Smiles Day Fund* – 2016 event expenses funded
- *Snyder's Wildlife Display Fund* – monthly aviary and aquarium expenses paid

## New Funds Established in 2016

- *Schuyler County Fair and Livestock Association Fund*
- *City of Rushville Parks Fund*
- *Schuy-Rush Park Miniature Golf Fund*

## Scholarships Awarded in 2016

- *Joshua Phillips Memorial Athletic Scholarship* – three scholarships awarded
- *Late Knight Cruisers Scholarship* – one scholarship awarded
- *Schuyler County Jail Museum Hinners Scholarship* – two scholarships awarded

The generosity of hundreds of donors, fundraising by volunteers, and gifts of all amounts resulted in the growth of many of the funds. Year to date donations exceeded \$797,000.00. Projects have been supported with \$78,000.00 in expenditures. Cumulative Foundation donations and gifts since 2008 now exceed \$3.2 million. More than \$1.8 million have been used for fund projects and activities.

Members of the Board of Directors are: Donovan L. Boehm, President, Brant Reed, Vice President, Leland Hardy, Secretary - Treasurer, Jerry Bartlett, Joe Bartlow, Barry Beck, Lynn Stambaugh, Joan Sullivan, and Leah Wilson. The Board is active in the continued growth of the Foundation and has plans for future successes. Board members and all volunteers involved with the Foundation are extremely grateful to those who have supported the Foundation's efforts.

The  
**Wise Choice**

Is Back !

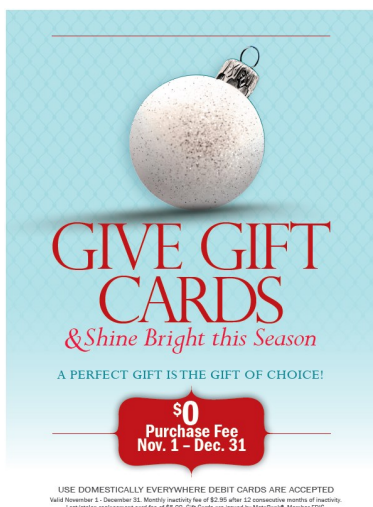


This 36-month Certificate of Deposit\* earns a competitive rate of interest.... PLUS, you'll be issued a "coupon" to redeem at any one time during the CD's original term to increase your interest rate if rates go up.

Member  
**FDIC**

What a  
**Wise Choice !**

Minimum deposit to open is \$2,500. Available for a limited time. Interest compounded quarterly. Penalty for early withdrawal. Full account disclosures available upon request.







## PREMIER CLUB

by Judy Quillen

The Premier Club has made many new friendships and enjoyed our travel experiences over the past 24 years and this year was no exception.

In February of 2016, thirty-five members and friends traveled to Williamsburg, IA for a guided tour of the Kinze Manufacturing Factory. Kinze Manufacturing was started by Jon Kinzenbaw in 1965 and is the largest privately owned manufacturer of agricultural equipment in the world, celebrating 50+ years in business.

In April we traveled to the Fox Theatre in St. Louis to see the Broadway Musical "The Bridges of Madison County". We were amazed to learn that Elizabeth Stanley, the star who played Francesca, was from Camp Point, IL.

In July 2016, the group traveled to "Canyon Country" featuring Arizona, Utah, and Las Vegas for an enjoyable 9 day tour. We stayed in beautiful lodges and enjoyed Grand Canyon National Park, Bryce Canyon National Park and Zion National Park.

November featured our annual trip to Branson. We stayed at the Radisson Hotel and enjoyed The Hughes Brothers Christmas Show, All Hands on Deck Show, and The Texas Tenors. At the Sight & Sounds Theatre we saw The Story of Moses, witnessing a re-enactment of the moment God first spoke to Moses at the burning bush and experiencing God's awe-inspiring power as we watched the parting of the Red Sea. We also attended the Pierce Arrow Show with Branson's funniest comedian, James Sibley. The final show was the Dutton Family Show. We enjoyed delicious meals at Landry's Seafood House and Montana Mike's Steakhouse.



Next year, July 17-27, 2017 we will be touring the Maritimes Coastal Wonders, which is in Nova Scotia. Some of the highlights are Halifax, Peggy's Cove, Cape Breton Island, Cabot Trail, Prince Edward Island, Anne of Green Gables, Hopewell Rocks, Fundy Trail, and Lunenburg. Please stop by the bank and pick up a brochure. A discount of \$100.00 is available if you sign up before January 17, 2017.

We would like to thank all of the Premier Club members and friends who have traveled with us and hope you will join us in 2017. So many wonderful experiences await you when you are a member and travel with us.

## TAKE CARE WHEN HOLIDAY SHOPPING

The Holidays bring friends and family together for celebrations and good cheer. Unfortunately, thieves are also busy this time of year, looking for unsuspecting victims.

### WHEN SHOPPING ONLINE

- **Use a secure, unique password for your email account.** If a website is compromised, criminals can leverage your email account to hack your other e-commerce accounts.
- **Use a single card for all online purchases to minimize your risks to one account.** Monitor that payment account frequently for unauthorized purchases or other charges. Consider using a prepaid card, loaded with only enough to complete your planned purchases.
- **Don't shop online using public computers or networks.**
- **Keep your computer and browser up-to-date with the latest patches and software.**
- **Shop at reputable websites and be sure the sites you visit are legitimate.** Pay close attention to the browser address bar before entering any sensitive information and review links to ensure they are directing you to a valid website.

*Remember that "free" normally is not "free".*

### WHEN SHOPPING IN PERSON:

- **Avoid driving alone or at night.**
- **Don't leave packages or valuables visible in your vehicle.**
- **Be aware of your surroundings when approaching or leaving your vehicle.**
- **Use ATMs only in well-lit, public places.**
- **Keep records of your credit and debit card numbers along with customer service numbers at home.**

Common sense and awareness can go a long way toward helping you and your family stay safer this holiday season.

If you are unsure of your surroundings or situation, either in person or online, get away and report the suspicious behavior or scam.

# CALENDAR OF EVENTS

Visit [www.rushvillestatebank.com](http://www.rushvillestatebank.com) for more community events !

Dec 19- Jan 1	Schuyler-Industry Schools Christmas Holiday Break	Feb 2	Groundhog Day
Dec 21	Winter Begins	Feb 12	Lincoln's Birthday
Dec 24	Christmas Eve – Bank Closes at Noon	Feb 14	Valentine's Day
Dec 26	Bank Closed	Feb 20	President's Day – Bank Closed Schuyler-Industry Schools Closed
Dec 30	2016 Year End Close – 2pm	Feb 22	Washington's Birthday
Dec 31	New Year's Eve – Bank Closes at Noon	Mar 1	Ash Wednesday
Dec 29 Jan 1	First Late Winter Deer Season	Mar 12	Daylight Savings Time Begins
Jan 2	Bank Closed	Mar 17	St. Patrick's Day Schuyler- Industry Schools Closed (Teachers Institute)
Jan 2	Schuyler-Industry Schools Classes Resume	Mar 20	First Day of Spring
Jan 13	Schuyler-Industry School Improvement (½ Day Attendance)	Mar 24	Schuyler-Industry School Improvement (½ Day Attendance)
Jan 13-15	Second Late Winter Deer Season	Apr 1	April Fool's Day
Jan 16	Martin Luther King Holiday – Bank Closed Schuyler-Industry Schools Closed		



**Rushville State Bank**  
100 East Lafayette St, P.O. Box 50  
Rushville, IL 62681-0050  
217-322-3323

## DIRECTORS

Charles Burton, *Chairman*  
Gregg Roegge, *Vice Chairman*  
Van Adkisson  
Donovan L. Boehm  
Leslie E. Heffner  
David B. Hester  
Richard C. Teel  
F. Donovan Boehm, *Director Emeritus*  
Richard G. Schenk, *Director Emeritus*

## OFFICERS & STAFF

Gregg Roegge, *President & CEO*  
Linda Butler, *Vice President & Trust Officer*  
Kelly Greene, *Vice President & Cashier*  
Sandy Ward, *AVP & Information Systems Mgr*  
J.T. Thoenen, *AVP & Loan Officer*  
Jennifer Billingsley, *AVP & New Accounts*  
Judy Quillen, *Premier Club Coordinator*  
Denine Cox, *Data Processing*  
Beth Grover, *Data Processing*  
Janet Hall, *Financial Services Associate*  
Denise Morton, *Part-Time Trust Clerk*  
Cindy Henninger, *Teller*  
Cynthia Henninger, *Teller*  
Cindy Paisley, *Loan Clerk*  
Nancy Peak, *Receptionist*  
Joni Thomas, *Data Processing*  
Nancy Toland, *Teller*  
Ellen Butler, *Part-Time Teller*  
Sarah Roegge, *Part-Time Teller*



FDIC



TIME SENSITIVE MATERIAL !!  
PLEASE DELIVER IMMEDIATELY !!

ADDRESS SERVICE REQUESTED

Rushville State Bank  
100 E. Lafayette St.  
P.O. Box 50  
Rushville, IL 62681



First Class  
U.S. Postage  
PAID  
Permit No. 7  
Monmouth, IL 61462